

Head Teachers  
Primary Schools  
London Borough of Redbridge

John Savage Centre  
Fencepiece Road  
Hainault  
Ilford  
Essex  
IG6 2NB  
Please ask for Carole Bowerman  
Direct line 020 8501 3944  
Fax 020 8500 3893  
carole.bowerman@redbridge.gov.uk

7<sup>th</sup> January 2010

Dear Colleagues,

**Re: Continuous Professional Development (CPD)**

Please find enclosed copies of our CPD programme for the forthcoming year. I have consulted with Primary schools in the borough and have come up with programmes which will be suited to the needs of schools and colleagues.

As you can see from the attached information there will be ten initial programmes which will continue throughout this academic year and we have also included programmes which will run throughout the autumn term 2010/2011. There will also be additional programmes run by the National Youth Choir and the London Symphony Orchestra as well as a variety of 'Sing Up' programmes throughout the year.

Further copies of the booking forms can also be obtained on the RMS website – [www.redbridgemusic.org.uk](http://www.redbridgemusic.org.uk)

My team are also available for on-going support work within day schools and should you require this support then please do not hesitate to contact me at the John Savage centre or via email.

I hope these programmes will be of use to your teachers and I look forward to an enjoyable year.

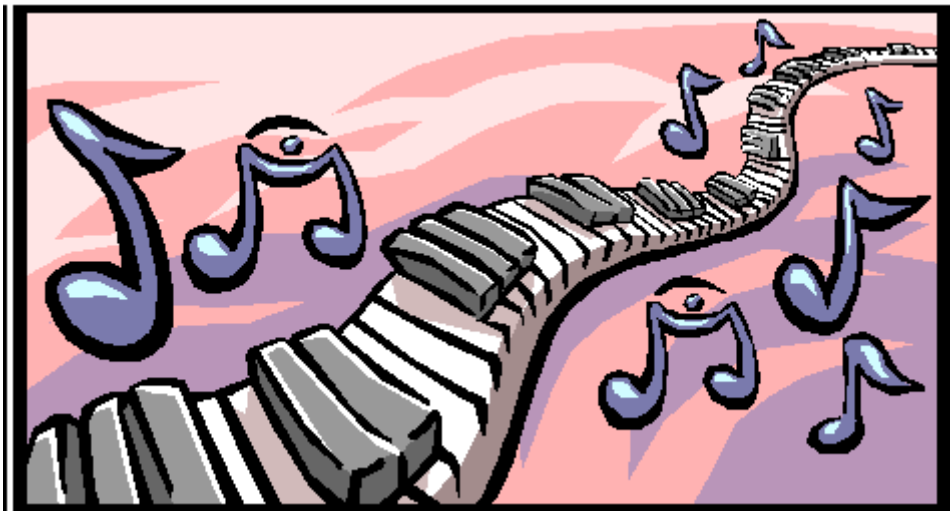
Yours sincerely

Carole Bowerman  
Head of Curriculum Support and World Music



# Redbridge Music Service

Continuous Professional Development  
Programme  
2010



## **CPD for Primary Colleagues 2010 – 2011**

### **2<sup>nd</sup> February      Improve your personal singing skills**

Improve your vocal skills through songs that can be found on the Sing Up web-site. This CPD will help to improve vocal technique and will include posture, breathing, diction and pitch. A must for anyone who is keen to improve their singing.

### **9<sup>th</sup> February      Early Years Music**

This workshop offers a range of new resources and music games and songs which will boost your planning. We aim to develop your confidence in running a music session and will be exploring ways in which music supports the whole curriculum. We will also help you to invent your own activities.

### **23<sup>rd</sup> February      Creative Curriculum and the Rose Report**

This course is intended for KS1 and KS2 teachers who have little previous experience of teaching music. It will provide suggestions of how music can enhance work in other curriculum areas, in line with the recommendations in the Rose Report. If you wish a specific topic to be covered please leave a message for Maggie Goble on 020 8501 3944 no later than two weeks before the course.

### **16<sup>th</sup> March      SEN KS2 Music for LSAs**

Music is a unique tool that can support, motivate, influence and develop children with learning difficulties in both mainstream and special units. Through practical activities we will show how music can enhance learning in key skill areas of personal and social development and communication. In a workshop setting, LSAs will be given the opportunity to survey a wide range of resources and develop a bank of ideas to try out for use in the classroom or wherever music takes place.

### **23<sup>rd</sup> March      Music for Beginners**

Have you ever felt totally inadequate when it comes to teaching a music lesson? This session is intended for class teachers who have no confidence in teaching music.

### **27<sup>th</sup> April      Kodaly**

This session is intended to provide teachers with the beginning skills of using hands signs to enable children to read music. The course will use the John Curwen method.

**25<sup>th</sup> May                      Music for Beginners**

Have you ever felt totally inadequate when it comes to teaching a music lesson? This session is intended for class teachers who have no confidence in teaching music.

**8<sup>th</sup> June                      SEN KS2 Music for LSAs (follow up)**

Following on from the initial workshop in the spring term, LSAs will review outcomes and be presented with additional music resources to add to their musical bank. Appropriate ICT resources will also be made available.

**15<sup>th</sup> June                      Assessment**

This thorny area will be covered by working out a common means to assess music using the National Curriculum levels. The session will also include assessment grids and where possible examples of students work.

**29<sup>th</sup> June                      Early Years Music**

This workshop offers a range of new resources and music games and songs which will boost your planning. We aim to develop your confidence in running a music session and will be exploring ways in which music supports the whole curriculum. We will also help you to invent your own activities.

**14<sup>th</sup> September              Recorder for beginners**

This course is intended for KS1 and KS2 class teachers. We will learn to play and read simple tunes on the descant recorder.

**19<sup>th</sup> October                Improve your personal singing skills**

Improve your vocal skills through songs that can be found on the Sing Up web-site. This CPD will help to improve vocal technique and will include posture, breathing, diction and pitch. A must for anyone who is keen to improve their singing.

**9<sup>th</sup> November                SEN KS1 Music for LSAs**

Music is a unique tool that can support, motivate, influence and develop children with learning difficulties in both mainstream and special units. Through practical activities we will show how music can enhance learning in key skill areas of personal and social development and communication. In a workshop setting, LSAs will be given the opportunity to survey a wide range of resources and develop a bank of ideas to try out for use in the classroom or wherever music takes place.

**7<sup>th</sup> December                ICT (@ Fairlop Primary)**

This session will show teachers the resources and effective websites that are available in ICT for delivering the music part of the curriculum.

15th December 2009



## Booking Form

**Improve your singing skills  
2<sup>nd</sup> February 2010  
4.30pm -6pm**

All teachers in the London Borough of Redbridge may attend this course **free** of charge. Teachers from other Local Authorities may also attend at a cost of £10 per delegate.

To make a booking

- Telephone us on 020 8501 3944
- Fax us on 020 8500 3893
- E-mail us on [carole.bowerman@redbridge.gov.uk](mailto:carole.bowerman@redbridge.gov.uk)
- Or return the booking form to us at the Redbridge Music Service

We will hold your requested number of places for you and send you confirmation of your booking.

The closing date for receipt of completed booking forms is Monday 18<sup>th</sup> January 2010. We reserve the right to cancel the course if not enough people attend.

---

I would like to reserve \_\_\_\_\_ staff places at the Singing CPD programme to be held at the Redbridge Music Service on Tuesday 2<sup>nd</sup> February 2010

**Contact Name:** \_\_\_\_\_

**School Name:** \_\_\_\_\_

**Telephone:** \_\_\_\_\_ **Mobile:** \_\_\_\_\_

**Email** \_\_\_\_\_





## Booking Form

**Early Years Music**  
**9<sup>th</sup> February 2010**  
**4.30pm -6pm**

All teachers in the London Borough of Redbridge may attend this course **free** of charge. Teachers from other Local Authorities may also attend at a cost of £10 per delegate.

To make a booking

- Telephone us on 020 8501 3944
- Fax us on 020 8500 3893
- E-mail us on [carole.bowerman@redbridge.gov.uk](mailto:carole.bowerman@redbridge.gov.uk)
- Or return the booking form to us at the Redbridge Music Service

We will hold your requested number of places for you and send you confirmation of your booking.

The closing date for receipt of completed booking forms is Monday 25<sup>th</sup> January 2010. We reserve the right to cancel the course if not enough people attend.

---

I would like to reserve \_\_\_\_\_ staff places at the Early Years Music CPD programme to be held at the Redbridge Music Service on Tuesday 9<sup>th</sup> February 2010

**Contact Name:** \_\_\_\_\_

**School Name:** \_\_\_\_\_

**Telephone:** \_\_\_\_\_ **Mobile:** \_\_\_\_\_

**Email** \_\_\_\_\_



## Booking Form



**The Creative Curriculum and the Rose Report  
23rd February 2010  
4.30pm -6pm**

All teachers in the London Borough of Redbridge may attend this course **free** of charge. Teachers from other Local Authorities may also attend at a cost of £10 per delegate.

To make a booking

- Telephone us on 020 8501 3944
- Fax us on 020 8500 3893
- E-mail us on [carole.bowerman@redbridge.gov.uk](mailto:carole.bowerman@redbridge.gov.uk)
- Or return the booking form to us at the Redbridge Music Service

We will hold your requested number of places for you and send you confirmation of your booking.

The closing date for receipt of completed booking forms is Monday 8<sup>th</sup> February 2010. We reserve the right to cancel the course if not enough people attend.

---

I would like to reserve \_\_\_\_\_ staff places at the Creative Curriculum CPD programme to be held at the Redbridge Music Service on Tuesday 23rd February 2010.

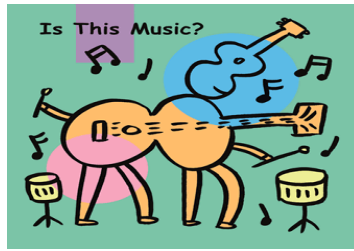
**Contact Name:** \_\_\_\_\_

**School Name:** \_\_\_\_\_

**Telephone:** \_\_\_\_\_ **Mobile:** \_\_\_\_\_

**Email** \_\_\_\_\_





## Booking Form

**SEN KS2 Music for LSAs**  
**16<sup>th</sup> March 2010**  
**4.30pm -6pm**

All teachers in the London Borough of Redbridge may attend this course **free** of charge. Teachers from other Local Authorities may also attend at a cost of £10 per delegate.

To make a booking

- Telephone us on 020 8501 3944
- Fax us on 020 8500 3893
- E-mail us on [carole.bowerman@redbridge.gov.uk](mailto:carole.bowerman@redbridge.gov.uk)
- Or return the booking form to us at the Redbridge Music Service

We will hold your requested number of places for you and send you confirmation of your booking.

The closing date for receipt of completed booking forms is Monday 1<sup>st</sup> March 2010. We reserve the right to cancel the course if not enough people attend.

---

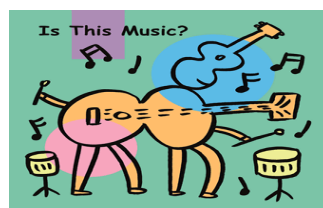
I would like to reserve \_\_\_\_\_ staff places at the SEN KS2 for LSAs CPD programme to be held at the Redbridge Music Service on Tuesday 16<sup>th</sup> March 2010.

**Contact Name:** \_\_\_\_\_

**School Name:** \_\_\_\_\_

**Telephone:** \_\_\_\_\_ **Mobile:** \_\_\_\_\_

**Email** \_\_\_\_\_







## Booking Form

**Music for Beginners**  
**23<sup>rd</sup> March 2010**  
**4.30pm -6pm**

All teachers in the London Borough of Redbridge may attend this course **free** of charge. Teachers from other Local Authorities may also attend at a cost of £10 per delegate.

To make a booking

- Telephone us on 020 8501 3944
- Fax us on 020 8500 3893
- E-mail us on [carole.bowerman@redbridge.gov.uk](mailto:carole.bowerman@redbridge.gov.uk)
- Or return the booking form to us at the Redbridge Music Service

We will hold your requested number of places for you and send you confirmation of your booking.

The closing date for receipt of completed booking forms is Monday 8<sup>th</sup> March 2010. We reserve the right to cancel the course if not enough people attend.

---

I would like to reserve \_\_\_\_\_ staff places at the Music for beginners CPD programme to be held at the Redbridge Music Service on Tuesday 23<sup>rd</sup> March 2010.

**Contact Name:** \_\_\_\_\_

**School Name:** \_\_\_\_\_

**Telephone:** \_\_\_\_\_ **Mobile:** \_\_\_\_\_

**Email** \_\_\_\_\_





## Booking Form

**Kodaly**  
**27<sup>th</sup> April 2010**  
**4.30pm -6pm**

All teachers in the London Borough of Redbridge may attend this course **free** of charge. Teachers from other Local Authorities may also attend at a cost of £10 per delegate.

To make a booking

- Telephone us on 020 8501 3944
- Fax us on 020 8500 3893
- E-mail us on [carole.bowerman@redbridge.gov.uk](mailto:carole.bowerman@redbridge.gov.uk)
- Or return the booking form to us at the Redbridge Music Service

We will hold your requested number of places for you and send you confirmation of your booking.

The closing date for receipt of completed booking forms is Thursday 1<sup>st</sup> April 2010. We reserve the right to cancel the course if not enough people attend.

---

I would like to reserve \_\_\_\_\_ staff places at the Kodaly CPD programme to be held at the Redbridge Music Service on Tuesday 27<sup>th</sup> April 2010.

**Contact Name:** \_\_\_\_\_

**School Name:** \_\_\_\_\_

**Telephone:** \_\_\_\_\_ **Mobile:** \_\_\_\_\_

**Email** \_\_\_\_\_





## Booking Form

### Music for Beginners 25<sup>th</sup> May 2010 4.30pm -6pm

All teachers in the London Borough of Redbridge may attend this course **free** of charge. Teachers from other Local Authorities may also attend at a cost of £10 per delegate.

To make a booking

- Telephone us on 020 8501 3944
- Fax us on 020 8500 3893
- E-mail us on [carole.bowerman@redbridge.gov.uk](mailto:carole.bowerman@redbridge.gov.uk)
- Or return the booking form to us at the Redbridge Music Service

We will hold your requested number of places for you and send you confirmation of your booking.

The closing date for receipt of completed booking forms is Monday 10<sup>th</sup> May 2010. We reserve the right to cancel the course if not enough people attend.

---

I would like to reserve \_\_\_\_\_ staff places at the Music for beginners CPD programme to be held at the Redbridge Music Service on Tuesday 25<sup>th</sup> May 2010.

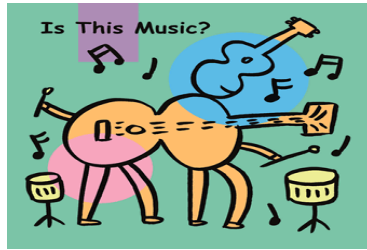
**Contact Name:** \_\_\_\_\_

**School Name:** \_\_\_\_\_

**Telephone:** \_\_\_\_\_ **Mobile:** \_\_\_\_\_

**Email** \_\_\_\_\_





## Booking Form

**SEN KS2 Music for LSAs (follow up)**  
**8<sup>th</sup> June 2010**  
**4.30pm -6pm**

All teachers in the London Borough of Redbridge may attend this course **free** of charge. Teachers from other Local Authorities may also attend at a cost of £10 per delegate.

To make a booking

- Telephone us on 020 8501 3944
- Fax us on 020 8500 3893
- E-mail us on [carole.bowerman@redbridge.gov.uk](mailto:carole.bowerman@redbridge.gov.uk)
- Or return the booking form to us at the Redbridge Music Service

We will hold your requested number of places for you and send you confirmation of your booking.

The closing date for receipt of completed booking forms is Friday 28<sup>th</sup> May 2010. We reserve the right to cancel the course if not enough people attend.

---

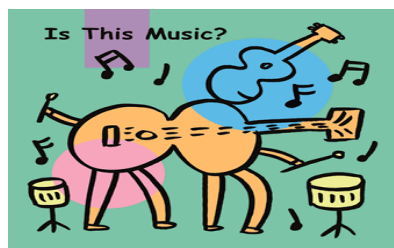
I would like to reserve \_\_\_\_\_ staff places at the SEN KS2 for LSAs follow up CPD programme to be held at the Redbridge Music Service on Tuesday 8<sup>th</sup> June 2010

**Contact Name:** \_\_\_\_\_

**School Name:** \_\_\_\_\_

**Telephone:** \_\_\_\_\_ **Mobile:** \_\_\_\_\_

**Email** \_\_\_\_\_





## Booking Form

**Assessment in Music**  
**15<sup>th</sup> June 2010**  
**4.30pm -6pm**

All teachers in the London Borough of Redbridge may attend this course **free** of charge. Teachers from other Local Authorities may also attend at a cost of £10 per delegate.

To make a booking

- Telephone us on 020 8501 3944
- Fax us on 020 8500 3893
- E-mail us on [carole.bowerman@redbridge.gov.uk](mailto:carole.bowerman@redbridge.gov.uk)
- Or return the booking form to us at the Redbridge Music Service

We will hold your requested number of places for you and send you confirmation of your booking.

The closing date for receipt of completed booking forms is Friday 28<sup>th</sup> May 2010. We reserve the right to cancel the course if not enough people attend.

---

I would like to reserve \_\_\_\_\_ staff places at the Assessment in Music CPD programme to be held at the Redbridge Music Service on Tuesday 15<sup>th</sup> June 2010

**Contact Name:** \_\_\_\_\_

**School Name:** \_\_\_\_\_

**Telephone:** \_\_\_\_\_ **Mobile:** \_\_\_\_\_

**Email** \_\_\_\_\_





## Booking Form

**Early Years Music**  
**29<sup>th</sup> June 2010**  
**4.30pm -6pm**

All teachers in the London Borough of Redbridge may attend this course **free** of charge. Teachers from other Local Authorities may also attend at a cost of £10 per delegate.

To make a booking

- Telephone us on 020 8501 3944
- Fax us on 020 8500 3893
- E-mail us on [carole.bowerman@redbridge.gov.uk](mailto:carole.bowerman@redbridge.gov.uk)
- Or return the booking form to us at the Redbridge Music Service

We will hold your requested number of places for you and send you confirmation of your booking.

The closing date for receipt of completed booking forms is Monday 14<sup>th</sup> June 2010. We reserve the right to cancel the course if not enough people attend.

---

I would like to reserve \_\_\_\_\_ staff places at the Early Years Music CPD programme to be held at the Redbridge Music Service on Tuesday 29<sup>th</sup> June 2010

**Contact Name:** \_\_\_\_\_

**School Name:** \_\_\_\_\_

**Telephone:** \_\_\_\_\_ **Mobile:** \_\_\_\_\_

**Email** \_\_\_\_\_





## Booking Form

**Recorder for Beginners**  
**14<sup>th</sup> September 2010**  
**4.30pm -6pm**

All teachers in the London Borough of Redbridge may attend this course **free** of charge. Teachers from other Local Authorities may also attend at a cost of £10 per delegate.

To make a booking

- Telephone us on 020 8501 3944
- Fax us on 020 8500 3893
- E-mail us on [carole.bowerman@redbridge.gov.uk](mailto:carole.bowerman@redbridge.gov.uk)
- Or return the booking form to us at the Redbridge Music Service

We will hold your requested number of places for you and send you confirmation of your booking.

The closing date for receipt of completed booking forms is Friday 23<sup>rd</sup> July 2010. We reserve the right to cancel the course if not enough people attend.

---

I would like to reserve \_\_\_\_\_ staff places at the Recorder for beginners CPD programme to be held at the Redbridge Music Service on Tuesday 14<sup>th</sup> September 2010

**Contact Name:** \_\_\_\_\_

**School Name:** \_\_\_\_\_

**Telephone:** \_\_\_\_\_ **Mobile:** \_\_\_\_\_

**Email** \_\_\_\_\_





## Booking Form

**Improve your singing skills  
19<sup>th</sup> October 2010  
4.30pm -6pm**

All teachers in the London Borough of Redbridge may attend this course **free** of charge. Teachers from other Local Authorities may also attend at a cost of £10 per delegate.

To make a booking

- Telephone us on 020 8501 3944
- Fax us on 020 8500 3893
- E-mail us on [carole.bowerman@redbridge.gov.uk](mailto:carole.bowerman@redbridge.gov.uk)
- Or return the booking form to us at the Redbridge Music Service

We will hold your requested number of places for you and send you confirmation of your booking.

The closing date for receipt of completed booking forms is Monday 4<sup>th</sup> October 2010. We reserve the right to cancel the course if not enough people attend.

---

I would like to reserve \_\_\_\_\_ staff places at the Singing CPD programme to be held at the Redbridge Music Service on Tuesday 19<sup>th</sup> October 2010

**Contact Name:** \_\_\_\_\_

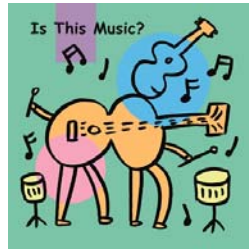
**School Name:** \_\_\_\_\_

**Telephone:** \_\_\_\_\_ **Mobile:** \_\_\_\_\_

**Email** \_\_\_\_\_







## Booking Form

**SEN KS1 Music for LSAs (follow up)  
9<sup>th</sup> November 2010  
4.30pm -6pm**

All teachers in the London Borough of Redbridge may attend this course **free** of charge. Teachers from other Local Authorities may also attend at a cost of £10 per delegate.

To make a booking

- Telephone us on 020 8501 3944
- Fax us on 020 8500 3893
- E-mail us on [carole.bowerman@redbridge.gov.uk](mailto:carole.bowerman@redbridge.gov.uk)
- Or return the booking form to us at the Redbridge Music Service

We will hold your requested number of places for you and send you confirmation of your booking.

The closing date for receipt of completed booking forms is Friday 22<sup>nd</sup> October 2010. We reserve the right to cancel the course if not enough people attend.

---

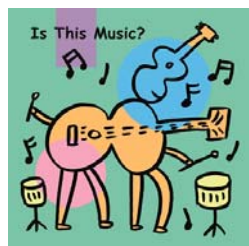
I would like to reserve \_\_\_\_\_ staff places at the SEN KS1 for LSAs follow up CPD programme to be held at the Redbridge Music Service on Tuesday 9<sup>th</sup> November 2010

**Contact Name:** \_\_\_\_\_

**School Name:** \_\_\_\_\_

**Telephone:** \_\_\_\_\_ **Mobile:** \_\_\_\_\_

**Email** \_\_\_\_\_





## Booking Form

### ICT in Music at Fairlop Primary School 7<sup>th</sup> December 2010 4.30pm -6pm

All teachers in the London Borough of Redbridge may attend this course **free** of charge. Teachers from other Local Authorities may also attend at a cost of £10 per delegate.

To make a booking

- Telephone us on 020 8501 3944
- Fax us on 020 8500 3893
- E-mail us on [carole.bowerman@redbridge.gov.uk](mailto:carole.bowerman@redbridge.gov.uk)
- Or return the booking form to us at the Redbridge Music Service

We will hold your requested number of places for you and send you confirmation of your booking.

The closing date for receipt of completed booking forms is Monday 22<sup>nd</sup> November 2010. We reserve the right to cancel the course if not enough people attend.

---

I would like to reserve \_\_\_\_\_ staff places at the ICT in Music CPD programme to be held at Fairlop Primary School on Tuesday 7<sup>th</sup> December 2010.

**Contact Name:** \_\_\_\_\_

**School Name:** \_\_\_\_\_

**Telephone:** \_\_\_\_\_ **Mobile:** \_\_\_\_\_

**Email** \_\_\_\_\_

